

---

Esperienze internazionali di  
prevenzione e presa in carico  
di diabete e patologie  
cardiovascolari

## European Diabetes Forum

---

Stefano Del Prato – President EUDF



European  
Diabetes Forum



**TAKE A STAND FOR**  
THE DIABETES  
COMMUNITY

# WE NEED TO RE-IMAGINE HOW DIABETES CARE IS DELIVERED AND WORK TOGETHER TO MAKE ITS DIAGNOSIS, TREATMENT AND MANAGEMENT BETTER

EUDF is a not-for-profit organization

MEMBERS



SUPPORTING COLLABORATORS



 **NEED FOR AN INTEGRATED, HONEST, GLOBAL VIEW**

# EUDF POLICY RECOMMENDATIONS

The Strategic Forums have developed specific, achievable sets of policy recommendations in three key areas.

## Five Priorities for Advancing Integrated Care



## Diabetes Registries

Enabling high quality diabetes care



## The Promise of Digital Tools in Diabetes

A roadmap for apps



## Diabetes data and Registries: Enabling high quality diabetes care

SEPTEMBER 12 RETRIO HALL  
14:00-16:00 CET

### PROGRAMME:

- Welcome and introduction
- Why Registries?
- The different roles of registries in research and diabetes care – chaired by Stefano Del Prato
  - Clinical: Hong Kong Diabetes Register
  - Research: European pre-T1D Registry
  - National: Swedish National Diabetes Register
  - Care: SWEET Registry
- Round Table: how to leverage existing research registries for clinical purposes
- The policy perspective on data and registries – chaired by Chantal Mathieu
  - WHO EURO: How to measure and monitor progress towards the global diabetes targets
  - EU Commission: Collaborative Health Information European Framework (CHIEF)
  - JACARD: Data availability, quality, accessibility and sharing
  - European Regulator: Opportunities and challenges of registries for regulatory decision-making
- Q&A, Wrap up & next steps



Sept 12 14:00-14:45 CET Spotlight Stage

## AI Driven Clinical Decision Support Systems:

Potential, concerns and what should it bring to people living with diabetes?



## | ADDITIONAL STRATEGIC PRIORITIES: THE NEW FACES OF DIABETES

### **Current Strategic Priorities:**

1. Use health data to define, measure and achieve better outcomes
2. Empower PwD through digital technologies and innovative therapies
3. Rethink health systems to focus on primary and integrated care
4. Identify people with undiagnosed diabetes as a basis for prevention & early intervention

# EUDF, AN ORGANIZATION WITH EUROPEAN AND NATIONAL IMPACT



European Commission



NATIONAL ENGAGEMENT



Because we can't afford not to:  
Let's make a joint health check for CVD and diabetes happen.

28 February - 2 March, 2023  
European Parliament: Altiero-Spinelli 3rd floor

Hosted by  
MEP István UJHELYI

European Collaborative effort  
in Diabetes Research

European Parliament  
Breakfast debate  
June 7  
08<sup>00</sup>-09<sup>00</sup>  
MEP salon  
ASP ground floor

Diabetes is one of the greatest health challenges of modern times - join us in this debate and let's take action together towards this increasing challenge.  
MEP Dan Nicu

Jasminita Sudarlung, Hugh Leverly, Professor Chantal Mathieu, Dr Kate Gopwala, Colin Lindberg, Dr Evita Cisarova

Register

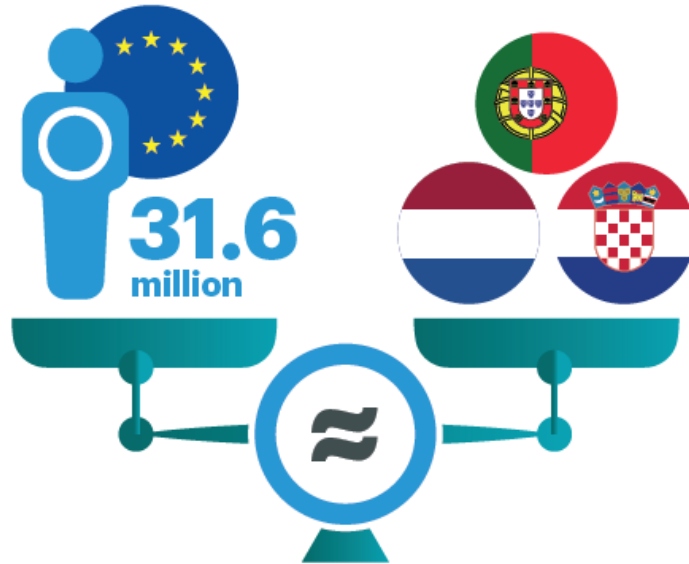
Organized by: JDRF, iHi, EASD, EFSD, FEND, FEND, ISPAD, PCDE, Science in Diabetes

# DIABETES COMMUNITY PLEDGE

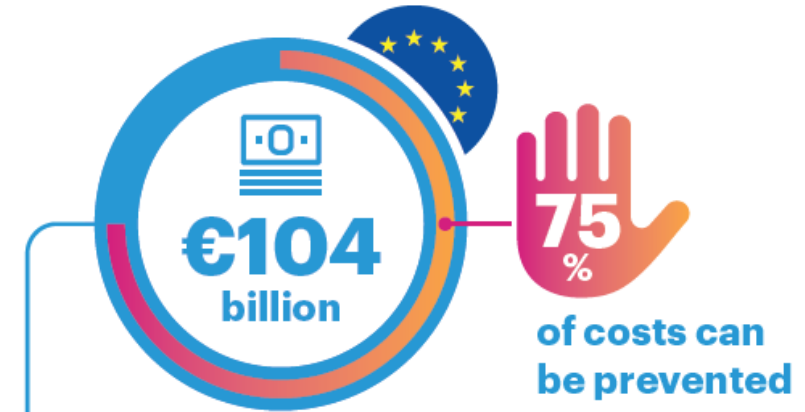


**TAKE A STAND FOR**  
THE DIABETES  
COMMUNITY

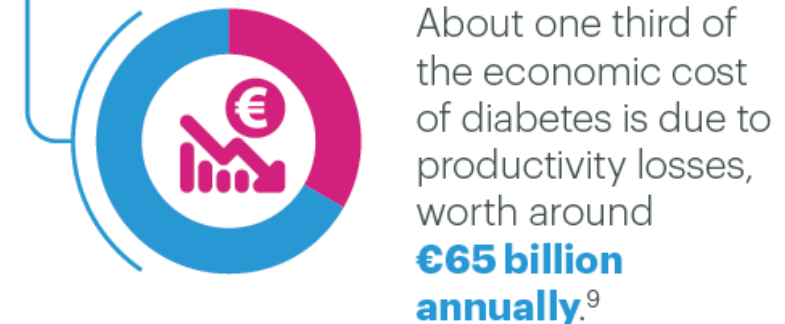
# DIABETES IN EUROPE



An estimated **31.6 million people** in the EU live **with diabetes**, equivalent to the populations of the Netherlands, Portugal and Croatia combined



In 2021, total diabetes-related cost to the EU's healthcare systems was **€104 billion**.<sup>8</sup> 75% of these costs are due to **avoidable complications** and can thus be prevented through good diabetes management.



# DIABETES COMMUNITY PLEDGE

## FOR THE 2024 EUROPEAN ELECTIONS

### 1 Early detection

Ensure timely diagnosis and alert people at risk



### 2 Equitable high-quality care

Provide the right treatment for the right person at the right time



### 3 Empowering people

Address lack of awareness and understanding about diabetes



### 4 Embracing science and technology

Harness their untapped potential to deliver effective and tailored care for PwD and those at risk





# 1

## EARLY DETECTION

Ensure timely diagnosis and alert people at risk



Early detection and diagnosis are essential for diabetes management, enabling timely treatment, the avoidance of serious complications and improved health outcomes and quality of life

### Taking action:

- **Health check programmes in all age groups for all types of diabetes and their most frequently associated co-morbidities (such as cardiovascular and kidney disease)**
- **Monitoring pathways to prevent metabolic, neurocognitive and other health risks**
- **Primary and community care**

# 2

## EQUITABLE HIGH-QUALITY CARE



Provide the right treatment for the right person at the right time

Many policy barriers prevent PwD from accessing the best care options. We need to tackle inequalities in diabetes care access both within and between countries across the EU

### Taking action:

- **Ensure equitable and affordable access to medicines, supplies, devices and digitally-enabled technologies**
- **Timely access to the most appropriate management options**
- **Train HCPs and strengthen their capacity**
- **Overcome silo budgeting barriers and facilitate integrated and people-centred care**
- **Overcome therapeutic inertia**

# 3

## EMPOWERING PEOPLE



Address lack of awareness and understanding about diabetes

By being treated as equals in both care and regulatory processes, PwD can be empowered to manage their condition and flourish as fully productive and participating members of society

---

### Taking action:

- **Support shared decision-making between PwD and HCPs**
- **PwD at the centre of research, regulatory, policy and evaluation processes**
- **Enhance self-management education and peer support**
- **Fight stigmatisation**

# 4

## EMBRACING SCIENCE AND TECHNOLOGY



Harness their untapped potential to deliver effective and tailored care for PwD and those at risk

Science and technology open vast new possibilities for preventing diabetes and caring for the rising number of PwD, including through improved data collection, self-management and treatments

---

### Taking action:

- **Invest in digital innovation**
- **Enhance the collection of clinical data**
- **Fund diabetes research**